



DESCHUTES
LAND
TRUST

2022 ANNUAL REPORT

Conserving and caring for the lands and waters that sustain Central Oregon.



LAND TRUST

From Our Director

As I look back on 2022, I recall the moment I first stepped foot on what is now Paulina Creek Preserve. It was a cold, wintery, blue sky day with an incredible view of Paulina Peak in the background of burbling Paulina Creek. The Land Trust already had big plans for 2022 and the opportunity to conserve this amazing place was just a dream.

Fortunately, over the course of the year, our community pulled together to make Paulina Creek Preserve a reality! It is because of you, our dedicated supporters, volunteers, and donors that we are able to conserve, care for, and connect the community to the lands entrusted to us, while also conserving new places like Paulina Creek Preserve.

Last year, thanks to you we restored meadows and planted thousands of native plants. Thanks to you we restored McKay Creek at Ochoco Preserve creating miles of new stream habitat. Thanks to you we made our properties healthier by restoring juniper and pine forests. Thanks to you we worked with local farmers and ranchers to conserve their lands for future generations.

Looking ahead, I believe the Land Trust has the opportunity to make history. We have grown our organization to continue to lead innovative restoration projects, conserve new lands, apply new approaches to caring for our lands, and engage more partners, communities, and supporters than ever. In 2023, we hope you'll join us and learn more as we continue our efforts to conserve Skyline Forest, restore more meadows, streams, and forests at our Preserves, and connect more people with these amazing places we all love.

I believe the future of the Land Trust will be bright, and I know that it will take all of us working together to build a future where conservation and community care come together to protect, heal, and sustain the natural world around us. This year I ask you to help us widen the circle and bring our communities together to make our collective goals for the future of Central Oregon a reality. Let's make history together!



With gratitude,

Rika Ayotte

Rika Ayotte
EXECUTIVE DIRECTOR

FINANCIAL SUMMARY

The Land Trust's fiscal year runs from January 1 through December 31. This financial summary comes from the Land Trust's yet-to-be audited 2022 financial statements and are subject to change. Audited statements are available upon request. A copy of the Deschutes Land Trust's Form 990 can be found at www.guidestar.org.



WASIM MURJASEY

Where did our support come from this year?

TOTAL \$4,326,405

restricted donations

42%
\$1,814,947

grants

31%
\$1,325,182

unrestricted donations

25%
\$1,081,587

investments + other

2%
\$104,689

What did your support make possible this year?

TOTAL \$3,922,406

conservation + stewardship

80%
\$3,141,709

education + outreach

13%
\$501,983

organizational sustainability

4%
\$168,139

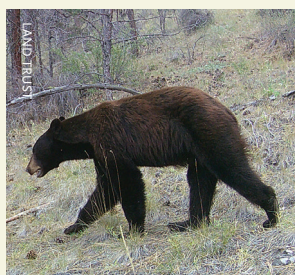
management + support

3%
\$110,575

VITAL SIGNS

endowment for permanent stewardship of conserved lands
\$2,176,964

acres conserved
18,742



number of donor households
1,745



volunteer hours donated since 1995
114,548

value of conserved lands
\$21,880,737



Stay up-to-date with Land Trust news! Join our e-newsletter: deschuteslandtrust.org/enews



The Deschutes Land Trust conserves and cares for more than 18,742 acres in our region for today, tomorrow, and for generations to come.

BOARD OF DIRECTORS

- PRESIDENT**
Melissa Kent
Breck Flanagan-Caldwell
Stacey Forson
- VICE PRESIDENT**
Ann Richardson
Rob Garrott
Danielle Lordi
- TREASURER**
Jim Nicol
Daniele McKay
Gonzalo Mendez
- SECRETARY**
Michelle McSwain
Amy Miller
Mike Shadrach
Austin Smith Jr.
Inge Wells

LAND TRUST STAFF

- EXECUTIVE DIRECTOR**
Rika Ayotte
Gabriel Juarez
Nadia Kelem
- Natasha Bellis
Katie McGee
- Pat Cohen
Sarah Mowry
- Peter Cooper
Allen Pfeiffer
- Amanda Egertson
Michael Rubovits
- Jason Grant
Jen Zalewski
- Jana Hemphill
Sarah Holcombe



CONSERVATION. COMMUNITY. CARING FOR THE LAND.

DESCHUTESLANDTRUST.ORG | 210 NW IRVING AVENUE, SUITE 102, BEND, OREGON 97703

